



Promoting the enjoyment, knowledge and benefits of gardens and gardening

Open Gardens South Australia

Welcomes you to

Bellosguardo Estate

Saturday 16th & Sunday 17th November, 2024

Nestled in the heart of the Adelaide Hills, Bellosguardo Estate is a labour of love that combines Peter Bellosguardo's Italian heritage, with the breathtaking landscape of South Australia. Peter, a second-generation stonemason, began shaping these grounds over 22 years ago, inspired by his parents, Pasquale and Paola. Today, the gardens are a tribute to family memories, hard work, and an enduring love for nature. We hope you enjoy the journey through each of these special spaces, discovering the stories etched into every stone, plant, and pathway

You begin your tour at the Parterre di Pasquale, named in memory of Peter's father. This meticulously designed rose garden, framed with abelia, euonymus, rosemary, and topiary conifers, recalls classic Italianate symmetry and elegance. David Austin and Pierre de Ronsard roses lend their fragrance, capturing Pasquale's love for roses and natural beauty. The parterre serves as a fragrant reminder of Peter's heritage, where his father's influence is palpable in each carefully placed stone and plant.

Next, you will wander down an avenue of liquid amber and espaliers to Paola's Patch, a thriving veggie garden honouring Peter's mother, who had a passion for growing food and feeding her family. With a formal layout of scalloped stone walls, this garden features seasonal vegetables, colourful blooms, and espaliered fruit trees. It's a space that combines practicality with abundance, just as Paola did in her own kitchen garden.

Further along, discover Steven's Spiral, a striking brick sculpture created by Peter's eldest son, Steven. As an acclaimed artist with a background in stonemasonry, Steven constructed this piece from reclaimed bricks from the historic Adelaide Oval, symbolizing both history and renewal. His work reflects the beautiful artistic craft passed onto each generation of the Bellosguardo family, and some of Steven's other works can be found around the grounds.

As you walk on, you'll find Michael's Mercato, a nod to Peter's son Michael, who spent many hours gathering with his friends skateboarding and rollerblading here whilst growing up. With a rustic charm and panoramic backdrop of the vineyard and valley, this shed continues to host gatherings - whether it's a long family lunch, or the small local marketplace and tearoom for today's Open Garden.

Venture onward to the Parco di Vista, an expansive park area that offers breathtaking views over the neighbouring vineyards and valley. Inspired by the vistas of Tuscany, this area is dotted with a mix of English trees including claret ash, crab apple, maple and Chinese elm, inviting you to pause, breathe, and soak in the beauty of the landscape.

Finally, conclude your tour at Emma's Landing. This charming boardwalk overlooks a peaceful pond where Peter's daughter, Emma, grew up wandering down the field stone staircase to a landing, where she would feed the ducks alongside her mother, Kerry, and siblings Steven and Michael. This spot holds cherished family memories, with the beauty of Australian wildlife offering a peaceful close to your journey through the property.

Thank you for visiting Bellosguardo Estate today. We hope you leave with memories as vivid as those that inspired its creation. This garden reflects our family's journey, blending heritage, nature, and artistry - a place we hope brings you joy, inspiration, and a connection to both past and present.

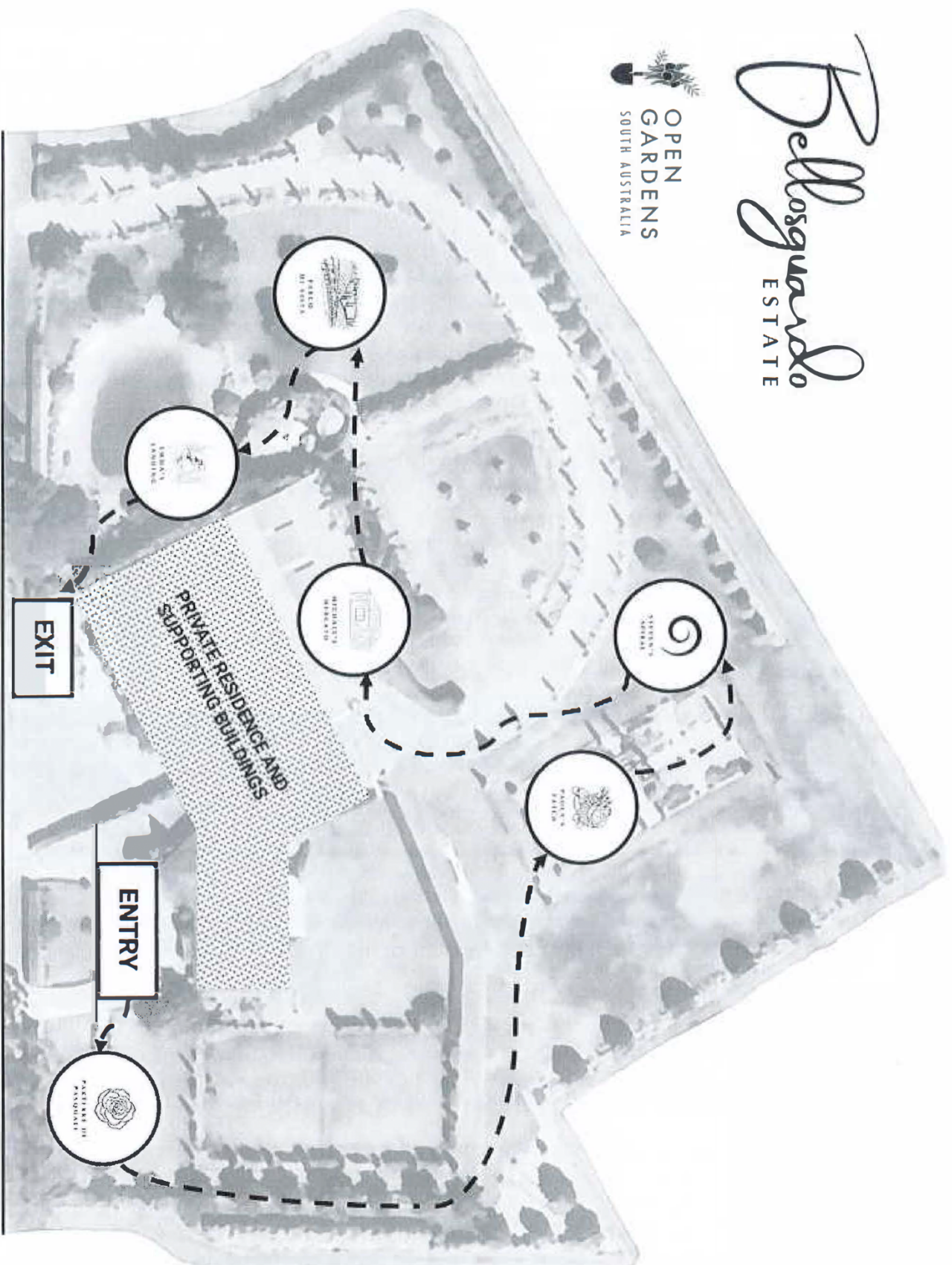
For further information about the property, visit www.bellosguardoestate.com.au

Open Gardens South Australia Inc: is a not for profit organisation opening private gardens to the general public. The purpose of Open Gardens SA is to educate and promote the enjoyment, knowledge and benefits of gardens and gardening in South Australia and to build strong public support for the development of gardens.

Web page: <http://opengardenssa.org.au/>

Facebook: <https://www.facebook.com/opengardenssa>

Bellosguardo ESTATE



←← Adelaide ←←

107 BLOCKS ROAD, BIRDWOOD

→→ Parking →→

LEGEND

Parterre di Pasquale
David Austin roses,
Pierre di Ronsade rose
arbour, topiary
conifers, euonymus,
rosemary, abelia,
pyrus.

Paola's Patch
Glory vine pergola,
topiaries, lily pilly
hedging, espaliers,
pencil pines, seasonal
vegetables and
flowers.

Steven's Spiral
Sculpture by
acclaimed South
Australian artist
Steven Bellosguardo.

Michael's Mercato
Tearoom, assorted
garden-focussed
market stalls.

Parco di Vista
Chinese elms, maple,
claret + flowering ash,
crab apple and
assorted English trees.

Emma's Landing
Crimson spiars, Pyrus
capitals, weeper
Sophora's, gleditsia.