



Promoting the enjoyment, knowledge and benefits of gardens and gardening

## Open Gardens South Australia

Welcomes you to

# Bellosguardo Estate

Saturday 22<sup>nd</sup> & Sunday 23<sup>rd</sup> March, 2025

---

Nestled in the heart of the Adelaide Hills, Bellosguardo Estate is a labour of love that combines Peter Bellosguardo's Italian heritage, with the breathtaking landscape of South Australia. Peter, a second-generation stonemason, began shaping these grounds over 23 years ago, inspired by his parents, Pasquale and Paola. Today, the gardens are a tribute to family memories, hard work, and an enduring love for nature. We hope you enjoy the journey through each of these special spaces, discovering the stories etched into every stone, plant, and pathway.

You begin your tour at the Parterre di Pasquale, named in memory of Peter's father. This meticulously designed rose garden, framed with abelia, euonymus, rosemary, and topiary conifers, recalls classic Italianate symmetry and elegance. David Austin and Pierre de Ronsard roses lend their fragrance, capturing Pasquale's love for roses and natural beauty. The parterre serves as a fragrant reminder of Peter's heritage, where his father's influence is palpable in each carefully placed stone and plant.

Next, you will wander down an avenue of liquid amber and espaliers to Paola's Patch, a thriving veggie garden honouring Peter's mother, who had a passion for growing food and feeding her family. With a formal layout of scalloped stone walls, this garden features seasonal vegetables, colourful blooms, and espaliered fruit trees. It's a space that combines practicality with abundance, just as Paola did in her own kitchen garden.

Further along, discover Steven's Spiral, a striking brick sculpture created by Peter's eldest son, Steven. As an acclaimed artist with a background in stonemasonry, Steven constructed this piece from reclaimed bricks from the historic Adelaide Oval, symbolizing both history and renewal. His work reflects the beautiful artistic craft passed onto each generation of the Bellosguardo family, and some of Steven's other works can be found around the grounds.

As you walk on, you'll find Michael's Mercato, a nod to Peter's son Michael, who spent many hours gathering with his friends skateboarding and rollerblading here whilst growing up. With a rustic charm and panoramic backdrop of the vineyard and valley, this shed continues to host gatherings - whether it's a long family lunch, or the small local marketplace and tearoom for today's Open Garden.

Venture onward to the Parco di Vista, an expansive park area that offers breathtaking views over the neighbouring vineyards and valley. Not unlike the vistas of Tuscany, this area is dotted with a mix of English trees including claret ash, crab apple, maple and Chinese elm, inviting you to pause, breathe, and soak in the beauty of the landscape.

Finally, conclude your tour at Emma's Landing. This charming boardwalk overlooks a peaceful pond where Peter's daughter, Emma, grew up wandering down the field stone staircase to a landing, where she would feed the ducks alongside her mother, Kerry, and siblings Steven and Michael. This spot holds cherished family memories, with the beauty of Australian wildlife offering a peaceful close to your journey through the property.

Thank you for visiting Bellosguardo Estate today. We hope you leave with memories as vivid as those that inspired its creation. This garden reflects our family's journey, blending heritage, nature, and artistry - a place we hope brings you joy, inspiration, and a connection to both past and present.

For further information about the property, visit [www.bellosguardoestate.com.au](http://www.bellosguardoestate.com.au)

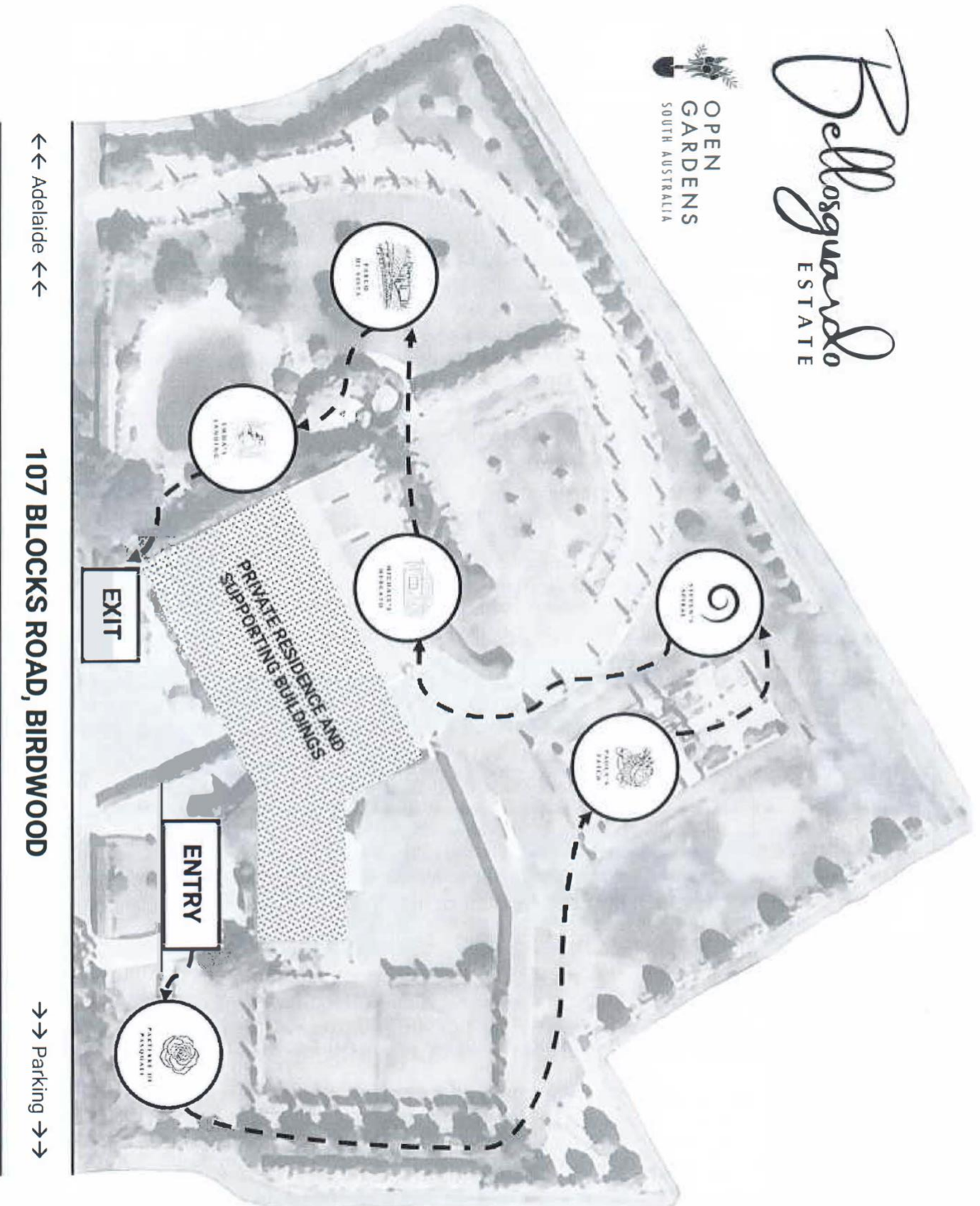
---

**Open Gardens South Australia Inc:** is a not for profit organisation opening private gardens to the general public. The purpose of Open Gardens SA is to educate and promote the enjoyment, knowledge and benefits of gardens and gardening in South Australia and to build strong public support for the development of gardens.

Web page: <http://opengardenssa.org.au/>

Facebook: <https://www.facebook.com/opengardenssa>

# Bellosguardo ESTATE



## LEGEND

**Parterre di Pasquale**  
 David Austin roses,  
 Pierre di Ronsade rose  
 arbour, topiary  
 conifers, euonymus,  
 rosemary, abelia,  
 pyrus.

**Paola's Patch**  
 Glory vine pergola,  
 topiaries, lily pilly  
 hedging, espaliers,  
 pencil pines, seasonal  
 vegetables and  
 flowers.

**Steven's Spiral**  
 Sculpture by  
 acclaimed South  
 Australian artist  
 Steven Bellosguardo.

**Michael's Mercato**  
 Tearoom, assorted  
 garden-focussed  
 market stalls.

**Parco di Vista**  
 Chinese elms, maple,  
 claret + flowering ash,  
 crab apple and  
 assorted English trees.

**Emma's Landing**  
 Crimson spiens, Pyrus  
 capitals, weeper  
 Sophora's, gleditsia.

We acknowledge the Kaurna people as the traditional custodians of the Adelaide Plains. We pay respect to their Elders past, present and emerging and value their spiritual connection and care of the land.